



85th WARNEMÜNDER WOCHE 1th-9th JULY 2023



Eastern Hemisphere Star Championship



Anlegen in Rostock

Wir heißen Sie in der reizvollen Ostseemetropole Rostock herzlich willkommen. Unsere Bootsliegeplätze an drei verschiedenen Standorten bieten Ihnen optimale Anlegemöglichkeiten, eine abwechslungsreiche Umgebung und einen guten Service. Genaue Details zu den Liegeplätzen können Sie aus der Seekarte des BSH 16-72 oder dem Sportbootsatz 3005 entnehmen.

Die topmodernen Schwimmsteganlagen bieten insgesamt ca. 515 Liegeplätze. An jeder Anlage befinden sich gepflegte und neue Sanitäreanlagen. Selbstverständlich stehen Ihnen Strom und Wasser zur Verfügung. Die Möglichkeit zur Müllentsorgung ist außerdem gewährleistet.

Wir sind sicher, dass Sie sich bei uns wohlfühlen werden und freuen uns auf Ihren Besuch.



Foto: Jens Scholz

Stadthafen, 112 Liegeplätze

54° 05' 39" N • 12° 07' 09" E

Warnowufer 58, 18057 Rostock

Wassertiefe: 4 m N.N.



Ausgesprochen attraktiv ist die Schwimmsteganlage direkt im Rostocker Stadthafen. In unmittelbarer Nähe befindet sich das Stadtzentrum mit historischem Stadtkern und der Shoppingmeile Kröpeliner Straße. Am Kabutzenhof finden Sie an den »Rostocker Hafenterrassen« neben dem maritimen Service eine belebte Infrastruktur. Hier erwarten Sie interessante Läden, Erlebnish Gastronomie und Restaurants, Clubs und Bars sowie die direkte Nähe zum Theater. Darüber hinaus gibt es hier eine optimale Nahverkehrsanbindung.

Kontakt



Telefon:
0381 4567-2351

E-Mail:
PGR@WIRO.de



WIRO.de *Die Wohnfühlgesellschaft*



Foto: Jens Scholz

Gehlsdorf, 173 Liegeplätze

54° 05' 39" N • 12° 07' 09" E

Warnowufer 58, 18057 Rostock

Wassertiefe: 4 m N.N.



Die Liegeplätze am idyllischen Nordufer der Warnow befinden sich in unmittelbarer Nähe zum Sportpark Gehlsdorf. Hier finden Sie ein vielfältiges Sport- und Freizeitangebot mit Schwimmhalle, Sauna, Beachvolleyball und Sporthalle. Für eine gute Erreichbarkeit sorgt die Anbindung von Berlin über die Autobahn A19.



Foto: Jens Scholz

Schmarl, 230 Liegeplätze

54° 08' 05" N • 12° 05' 02" E

Schmarl Dorf 13A, 18106 Rostock

Wassertiefe: 1,0 bis 4,9 m N.N.

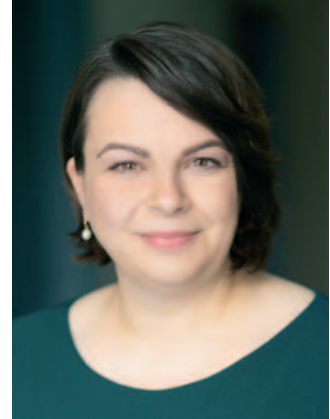


Zwischen der pulsierenden Hansestadt Rostock und dem Ostseebad Warnemünde erwartet Sie die Steganlage in Schmarl. In der Nähe bietet der Rostocker IGA-Park neben seinen tollen Gärten und Parkanlagen ein buntes Veranstaltungsprogramm. Von Pop und Klassik bis Traditionsschiff ist hier immer für Abwechslung gesorgt. Auf der Steganlage wartet die »Kombüse zum Fährhaus« mit leckeren Imbissangeboten auf Sie. Der Standort ist schnell von der Autobahn A19 durch den Warnowtunnel oder die B103 erreichbar.





Foreword by Minister Drese for the sailinginstructions for the 85th Warnemünder Woche



Dear sailors

we cordially invite you to the Warnemünder Woche 2023. It is already the 85th edition and we are pleased that again top-class and diverse regattas will be held here. From the small Optimist to the thick ship, there will be something for everyone.

Warnemünde is one of the best sailing areas in the world. There is hardly any other place where you can get directly from the harbor to the sailing area within such a short distance. The straight coast guarantees clear conditions with good winds and the famous "Warnemünde wave".

In addition, there are ideal conditions in the harbor on the so-called Mittelmole and in Hohe Düne. When the new building of the State Sports School is completed in the second half of 2023, a top infrastructure will be available on land with a state-of-the-art regatta center and a sports hotel.

Thus, even at 85 years of age, the Warnemünde Week is not old, but in the very best of years. It perfectly combines a history rich in tradition with the best and most modern general conditions.

We are very happy to welcome sailors from all over the world. At no other time of the year is the international flair in the town as evident as during the Warnemünde Week. And of course we hope that they are all as enthusiastic as we are and thus become ambassadors of our beautiful Baltic Sea resort.

I would especially like to thank the volunteer organizers and helpers. More than 300 people use their free time during these nine days to make the Warnemünde Week possible at all. And some of them even work the whole year to prepare the event. This deserves the highest recognition!

I sincerely wish you both great sporting success and a wonderful time in Warnemünde!

Kind regards

Stefanie Drese
Patron of the Warnemünde Week
Minister for Social Affairs, Health and Sport

BOOT & FUN

WASSERSPORT IST DEIN DING?
KOMM VORBEI!

INWATER

25.–27. AUGUST 2023
MARINA HAVELAUEN
WERDER (HADEL)

BERLIN

22.–26. NOVEMBER 2023
MESSEGELÄNDE BERLIN
EINGANG SÜD

ONLINE

365 TAGE IM JAHR
BOOT-BERLIN.DE





Sailing Instructions



Content

Foreword Greeting	3
Content and Organizer	5
Imprint	5
Sailing Instructions	7
Attachment 1 – Racing Areas	17
Course Plan	19
Attachment 2 – Courses	21
Venue Mooring Hohe Duene	23

Imprint

Publisher:
Warnemünder Segel-Club e.V.
Am Bahnhof 3a
18119 Warnemünde

Layout and graphics:
Pepe Hartmann
Billeweg 7 | 21465 Wentorf
Phone +49 (0)40 38 61 99 12
Mail: info@pepe-hartmann.de

Editorial:
WARNEMÜNDER WOCHE

Copyright:
Warnemünder Segel-Club e.V.
www.warnemuender-woche.com

Organizer

The Warnemünder Woche is organized by:

Warnemuender Segel-Club e.V. (WSC)
Am Bahnhof 3a
18119 Rostock-Warnemuende
Germany

In conjunction with

International Star Class Yacht Racing Association (“ISCYRA”)

Contact:

Warnemünder Woche
Am Bahnhof 3a (Yachthafen Mittelmole)
18119 Warnemünde - Germany
phone: +49.381.5234.0
mail: info@warnemuender-woche.com
web: www.warnemuender-woche.com

Race changing technology.

ADVANCED SAILING TECHNOLOGY


XPLORE+


XPEL

VERSO

Go beyond the competition with Verso.

Our premium collection of waterproof clothing that features ground-breaking fabric technologies, innovative designs, and optimised fabric constructions so you can achieve more.

Discover more at
www.de.gillmarine.com/the-verso-system

Gill





The notation '[NP]' in a rule of the sailing instructions (SIs) means that a boat may not protest another boat for breaking that rule. This changes RRS 60.1(a).

[SP] denotes a rule for which a standard penalty may be applied by the race committee without a hearing. A list of these breaches and the associated standard penalties will be posted on the Official Notice Board. However, the race committee may protest a boat when they consider the standard penalty to be inappropriate. This changes RRS 63.1 and Appendix A5.

1 RULES

The event is governed by the rules as stated in NoR 1.

2 CHANGES TO SAILING INSTRUCTIONS

- 2.1 Any change to the sailing instructions will be posted before 0900 on the day it will take effect, except that any change to the format or schedule of races will be posted by 2100 on the day before it will take effect.
- 2.2 Any reassignment of classes or fleets to course areas will be published before 0900 on the day it will take effect, or if flag AP is displayed ashore, at least 30 minutes before flag AP for that class or fleet is removed.

3 COMMUNICATION WITH COMPETITORS

- 3.1 Notices to competitors will be online at
<https://www.manage2sail.com/de-DE/event/WarnemuenderWoche2022#>
- 3.2 The race offices can be contacted by email at ro-mittelmole@warnemuender-woche.com
- 3.3 On the water, the race committee intends to monitor and communicate with competitors on VHF radio channel 72.
- 3.4 Failure of any information to be given or received shall not be grounds for redress. Information gathered on any other VHF channel or RC communication channel shall not be grounds for redress, except when a request for redress under this instruction is initiated by the RC or the INT. JURY/. This change RRS 62.1(a).
- 3.5 [DP] From the first warning signal until the end of the last race of the day, except in an emergency, a boat shall not make voice or data transmissions and shall not receive voice or data communication that is not available to all boats.
- 3.6 Boats may be hailed by either Bow or Sail number.

4 [DP] CODE OF CONDUCT

- 4.1 [NP] Competitors and support persons shall
 - 4.1.1 comply with any reasonable request from an event official;
 - 4.1.2 handle any boat and equipment provided by the organizing authority with proper care, seamanship, in accordance with any instructions for its use and without interfering with its functionality; and not in any way interfere with the functionality of supplied media or timing equipment.
- 4.2 Boats not racing shall avoid any area where boats are racing and any official vessel. This changes RRS 23.1.
- 4.3 Boats that are on a racing area to which they are not assigned shall avoid the area where boats are racing and any official vessel. This changes RRS 23.1.

5 SIGNALS MADE ASHORE

- 5.1 Signals made ashore will be displayed at the flagpole Mittelmole next to the south launching ramp.
- 5.2 When flag AP is displayed ashore, '1 minute' is replaced with 'not less than 60 minutes' in Race Signals AP. This changes RRS Race Signals AP.
- 5.3 When flag AP over H is displayed ashore, boats shall not leave the harbor. This changes Race Signals AP over H.

6 SCHEDULE OF RACES AND RACE AREAS

- 6.1 Skippers meeting will be held at times and dates as defined in NoR 8.1. at the Mittelmole south launching ramp.
- 6.2 Schedule of race and course assignments are as follows:

Course area	Race schedule									
	Sat	Sun	Mon	Tue	Wed	Thu	Fri	Sat	Sun	
BRAVO					Practice R.	2	2	2	2	

Klar zur Wende!




ROSTOCKER
SEIT 1878

DAS BIER DER

WARNEMÜNDER WOCHE



- 6.3 STCR 27.2. Format B. A minimum of eight (8) races are scheduled, four (4) completed races constitute a Championship.
- 6.4 The RC may change the schedule. Number of races per day may be sailed, per the Format B being sailed per STCR 34.3.9. The Race Committee reserves the right to get one race ahead of schedule should expected sailing conditions warrant.
- 6.5 Practice scheduled for Wednesday 5 July. Warning signal at 1400 hrs.
- 6.6 First Warning signal Thursday 6 July at 1200 hrs. Other race days see NoR 8.1.
- 6.6 To alert boats that a race or sequence of races will begin soon, the orange starting line flag will be displayed with one sound at least five minutes before a warning signal is made.

7 CLASS FLAGS

Class flags are their respective class insignia on white background .

8 RACE AREAS

Course CHARLY

9 COURSES

- 9.1 Course "0", Course "1", Course "3", or Course "4", STCR 34.3, consistent with the Format being sailed, STCR 34.3.7. See Addendum 1.
- 9.2 Courses will not be shortened. This changes RRS 32.
- 9.3 No later than the warning signal, the race committee signal vessel will display the approximate compass bearing of the first leg and the course to be sailed according to the course diagram.
- 9.4 Course Signals will be given as follows:
 - 9.4.1 Black board with white numbers as course designation: the course to be sailed.
 - 9.4.2 White board with black numbers: The approximate compass bearing of the first leg.

10 MARKS

- 10.1 Rounding marks will be yellow cylinders.
- 10.2 An offset (spreader) mark, if applicable, will be a spar buoy displaying a yellow flag.
- 10.3 The starting and finishing marks will be race committee vessels or spar buoys with orange (start) or blue (finish) flags. Addendum Race Areas shows the location of the racing areas.
- 10.4 New marks, as provided in SI 12, are of the same colour and shape as described but will be identified with a black band.
- 10.5 Provided that a gate mark is missing and has not been substituted in accordance with RRS 34, the remaining mark shall be rounded to port.

11 THE START

- 11.1 The starting line is between staffs displaying orange flags on the starting marks.
- 11.2 If any part of a boat's hull is on the course side of the starting line at her starting signal and she is identified, the race committee will attempt to hail her sail number. Failure to hail her number, failure of her to hear such a hail, or the order in which boats are hailed will not be grounds for a redress for request. This changes RRS 62.1(a).
- 11.3 [DP] A buoy may be attached to the race committee starting vessel ground tackle. Boats shall not pass between this buoy and the race committee starting vessel at any time.
- 11.4 [DP] Boats whose warning signal has not been made shall avoid the starting area. The starting area is defined as a rectangle 50 meters from the starting line and marks in all directions.
- 11.5 A boat that does not start within 10 minutes after her starting signal will be scored DNS without a hearing. This changes RRS A5.1 and A5.2.
- 11.6 A Race Committee boat displaying Code Flag "G" may pass to windward of the fleet in the event of a postponement, general recall or abandonment, which means: 'The Race Committee has signaled a postponement, general recall or abandonment. Boats are to return to the starting area immediately.

12 CHANGE OF THE NEXT LEG OF THE COURSE

To change the next leg of the course, the race committee will (a) lay a new mark, or (b) move the finishing line, or (c) move the leeward gate. When a new mark is laid, the original mark will be removed as soon as possible. When in a subsequent change a new mark is substituted, it will be substituted by an original mark. When Mark 1 has been substituted, Mark 1a is no longer a mark of the course. It will be removed as soon as practicable. This changes RRS 33.

*Echt
stilvoll.*



ECHT VON HIER. ECHT WIE WIR.

Stilsicher in Auftritt und Geschmack:
Das ist Güstrower Schlossquell Gourmet in der Designerflasche
mit dem einzigartigen Schliff. Ein natürliches Mineralwasser aus
unserer Region für ganz besondere Ansprüche.





13 THE FINISH

The finishing line is between staffs displaying blue flags on the finishing marks.

14 TIME LIMIT AND TARGET TIMES

- 14.1 The time limits will be as specified in STCR 34.3.7, for the Format being sailed in the Regatta.
- 14.2 Boats finishing more than 45 minutes after the first boat sails the course and finishes will be scored "Time Limit Expired" (TLE), without a hearing, as defined in STCR 34.6.3. This changes RRS 35, A5 and A10.
- 14.3 Failure to meet the Target Time will not be grounds for redress. This changes RRS 62.1(a).

15 PENALTY SYSTEM

- 15.1 RRS 44.1 and RRS Appendix P2.1 is changed so that the Two-Turns Penalty is replaced by the One-Turn Penalty. RRS Appendix T Arbitration para T1 (b) is changed to read:
- 15.2 A Post-Race Penalty is a 30 % Scoring Penalty, or 50 % of the difference between the boat's finishing position in the race and the score for Did not Finish, whichever is less. The Scoring Penalty is calculated as stated in rule 44.3(c). However, rule 44.1(a) applies.

16 HEARING REQUESTS

- 16.1 Hearing request forms requests should be submitted by using the online system available on the event website. This changes RRS 61.2, 61.3, 62.2 and 66. Alternative hearing request forms are available from the race offices and Hearing
- 16.2 The protest time limit is 30 min. after the last boat of the class or fleet has finished within her Finishing Window in the last race of the day or the race committee signals no more racing today, whichever is later. The protest time limit is 30 minutes after the signal no more racing today is displayed ashore.
- 16.3 Notices will be published no later than 60 minutes after the protest time limit to inform competitors of hearings in which they are parties or named as witnesses. Hearings may be scheduled to begin before the end of protest time. Hearings will be held beginning at the time and location published on the official notice board.
- 16.4 A list of boats that have been penalized under RRS Appendix P for breaking RRS 42 and under SI 16.6 for breaking a rule marked '[SP]' will be published.
- 16.5 Penalties for breaches of class rules, RRS 50, or rules in the Notice of Race or Sailing Instructions marked '[DP]', are at the discretion of the protest committee.
- 16.6 For breaches of a rule marked '[SP]', the race committee or technical committee may apply a standard penalty without a hearing or a discretionary penalty may be applied by the protest committee with a hearing. Addendum 'Standard Penalties' shows a list of these breaches and the associated standard penalties. However, the race committee or technical committee may protest a boat if it considers a standard penalty is inappropriate. A boat that has been penalized with a standard penalty shall neither be protested by another boat for the same incident nor can another boat request redress for this committee action. This changes RRS 60.1(b), 63.1 and A5.1.

17 SCORING

- 17.1 The scoring system is as follows: Low Point System of RRS A.
- 17.2 Four (4) races are required to be completed to constitute a series.
- 17.3 (a) When fewer than 5 races have been completed, a boat's series score is the total of her race scores.
(b) When 5 or more races have been completed, a boat's series score is the total of her race scores excluding her two worst scores.
- 17.4 Rule A5.3 applies.

18 [NP][DP] SAFETY REGULATIONS

- 18.1 [SP] Sign-In/-Out:
 - 18.1.1 RFID wristbands are provided at registration.
 - 18.1.2 A crew member of each boat shall personally sign-out each day when leaving their berth for racing by presenting their personal RFID wristband to a terminal. After returning ashore a crew member of each boat shall promptly and personally sign-in by again presenting their personal RFID wristband to a terminal.
 - 18.1.3 Each boat is responsible for verifying that the terminal acknowledged their sign-out/sign-in and require assistance if needed. The terminal will display one crew's name and the boat's sail number if the sign-out/sign-in was successful.
 - 18.1.4 In case of loss the boat is responsible for replacement. If the RFID wristband was lost at sea, the boat shall, after returning ashore, promptly and personally report their return to the race office and request a new RFID wristband. Thereafter, the boat shall immediately sign-in by presenting her new personal RFID wristband to a terminal.
 - 18.1.5 Locations of the terminals are shown in Addendum 'Harbour Maps and Locations'.



**SEGELWERKSTATT
WARNEMÜNDE**

NEU

WARTUNG & VERKAUF VON:

- RETTUNGSWESTEN
- RETTUNGSINSELN
- ZUBEHÖR

segelwerkstatt-warnemuende.de

UNSER SERVICE:

- FERTIGUNG
- YACHTSERVICE
- MASTEN
- REPARATUREN
- WINTERCHECK
- REINIGUNG
- FACHGERECHTE LAGERUNG
- WARTUNG UND VERKAUF VON RETTUNGSWESTEN, RETTUNGSINSELN UND ZUBEHÖR

Am Hechtgraben 6a
18147 Rostock-Gehlsdorf
www.segelwerkstatt-warnemuende.de

FON 0381877 57 82
FAX 0381877 57 83



- 18.2 Boats not leaving the harbour for a scheduled race, shall promptly notify the race office.
- 18.3 A boat that retires from a race shall notify the race committee at the first reasonable opportunity. This boat shall inform personally the race office no later than the protest time limit.
- 18.4 In case of a critical weather situation the race committee will give the following signal: three guns with green signal ammunition from a race committee vessel. The signal will be given after all races in the racing area are abandoned. This means:
- for boats: Safety first for all crews. Sail in the safest way to the next harbour.
 - for all support person vessels: Observe and escort boats leaving the racing areas and support the race committee in rescuing competitors and boats.
 - All support person vessels shall monitor VHF channel 16 for search and rescue instructions.

Additional safety information:

First aid station: The 24/7 phone number is: +49 157 5039 7021

- 18.5 If the crew is rescued, the abandoned boat shall be marked by the crew or a support person with a red-white-striped hazard tape to signal that the crew is safe. If possible, the tape shall be tied at or near the bow of the boat

19 REPLACEMENT OF EQUIPMENT

- 19.1 Substitution of competitors will not be allowed without prior written approval of the race committee. Requests shall be submitted by using the online system available on the event website.
- 19.2 Substitution of damaged or lost equipment limited by the class rules will not be allowed unless approved by the technical committee. Requests for substitution shall be made in writing to the technical committee at the first reasonable opportunity, which may be after the races. Requests shall be submitted by using the online system available on the event website.

20 [DP][NP] EQUIPMENT AND MEASUREMENT CHECKS

- 20.1 The event is an international event for the purposes of RRS G1.1(b).
- 20.2 A boat or equipment may be inspected at any time for compliance with the class rules, Notice of Race and Sailing Instructions.
- 20.3 When instructed by a race official on the water, a boat shall proceed to a designated area for inspection.

21 [NP][DP] IDENTIFICATION AND EVENT ADVERTISING

- 21.1 Event advertising and bow numbers, if provided, shall be displayed as described and published on the official notice board.
- 21.2 [SP] In accordance with NoR 6.2, bibs will be provided by the organizing authority for competitors aboard the boats ranked first, second and third in the series at the beginning of that day. Bibs shall be picked up every morning from 0830 to 1000 hrs. at the registration desk and shall be returned no later than protest time limit. Competitors shall wear the bibs on top of any clothing or personal floatation device, visible while racing that day. The location of the registration desk is shown in Addendum 'Harbour Map and Locations'.

22 OFFICIAL VESSELS

- 22.1 Official vessels will be identified as follows:

Race committee	"RC"
Jury	"Jury"
Measurer / Equipment Inspection	"M"
Rescue / First Aid / Medical	„Rescue“ or „Wasserwacht“
Mesdia / Press	"Press"

- 22.2 Actions by official vessels, helicopters and drones shall not be grounds for requesting redress by a boat. This changes RRS 60.1(b)



ReBob

More than Ropes: Gleistein sets sail for a sustainable future



ReLite

ReBob relies entirely on environmentally friendly rPET. In combination with the proven construction of the comfort-oriented Gemini-X sheet, ReBob is a durable mooring line and at the same time an excellent all-purpose line.

ReLite tames bio-based Dyneema® fibres with a reinforced cover of high-quality rPET for use on board of cruiser yachts with conventional fittings. As a halyard and sheet with minimal stretch, ReLite brings maximum control for ambitious sailors. The rPET used by Gleistein, with the characteristics of well-known polyester fibres, gives recycled beverage bottles in highest purity a second life.



More than Ropes.

Gleistein



23 SUPPORT PERSONS

- 23.1 All support persons and support person vessels shall comply with the 'Event Support Team Regulations' published on the event website.
- 23.2 RRS 64.5(b) is changed as follows:
The protest committee may also penalize a boat that is a party to a hearing under rule 60.3(d) or 69 for the breach of a rule by a support person by changing the boat's score in a single race, up to and including disqualification, especially when the protest committee decides that
- (1) the boat may have gained a competitive advantage as the result of the breach by the support person, or
 - (2) the support person committed a further breach after having been warned by the protest committee, that a penalty may be imposed.

24 [DP] TRASH DISPOSAL

Trash may be placed aboard official or support person vessels.

25 [NP] MEDIA AND POSITIONING EQUIPMENT

- 25.1 [SP] Boats assigned to install and operate onboard camera units or equivalent dummy devices shall pick up their units every morning at the registration desk and shall return them no later than protest time limit. Boats assigned to install camera units will be informed before 2100 hrs. the day before. A crew member of these boats shall join an instruction meeting at 0900 hrs. at the registration desk. The location of the registration desk is shown in Addendum 'Harbour Map and Locations'.
- 25.2 [DP] The organizing authority may request competitors to carry on board and use two-way communication devices for media interviews. Using this device for media interviews does not violate NoR 3.4.
- 25.3 [SP] Boats assigned to install and operate GPS positioning tracking units shall pick up their devices every morning at the registration desk and shall return them no later than protest time limit. The location of the registration desk is shown in Addendum 'Harbour Map and Locations'.

24 PRIZES

Prizes will be given as defined in NoR 22.



SIKA
MARINE



THE
PROFESSIONAL'S
CHOICE

SIKA – MEHR ALS 30 JAHRE ERFAHRUNG IM YACHT- UND BOOTSBAU

Lösungen für den Neubau, die Instandhaltung sowie die Reparatur:

- Kleb- und Dichtstoffe für die Erstausrüstung und das Winterlager
- Dekorative Decksbeläge für mehr Komfort und Sicherheit an Bord

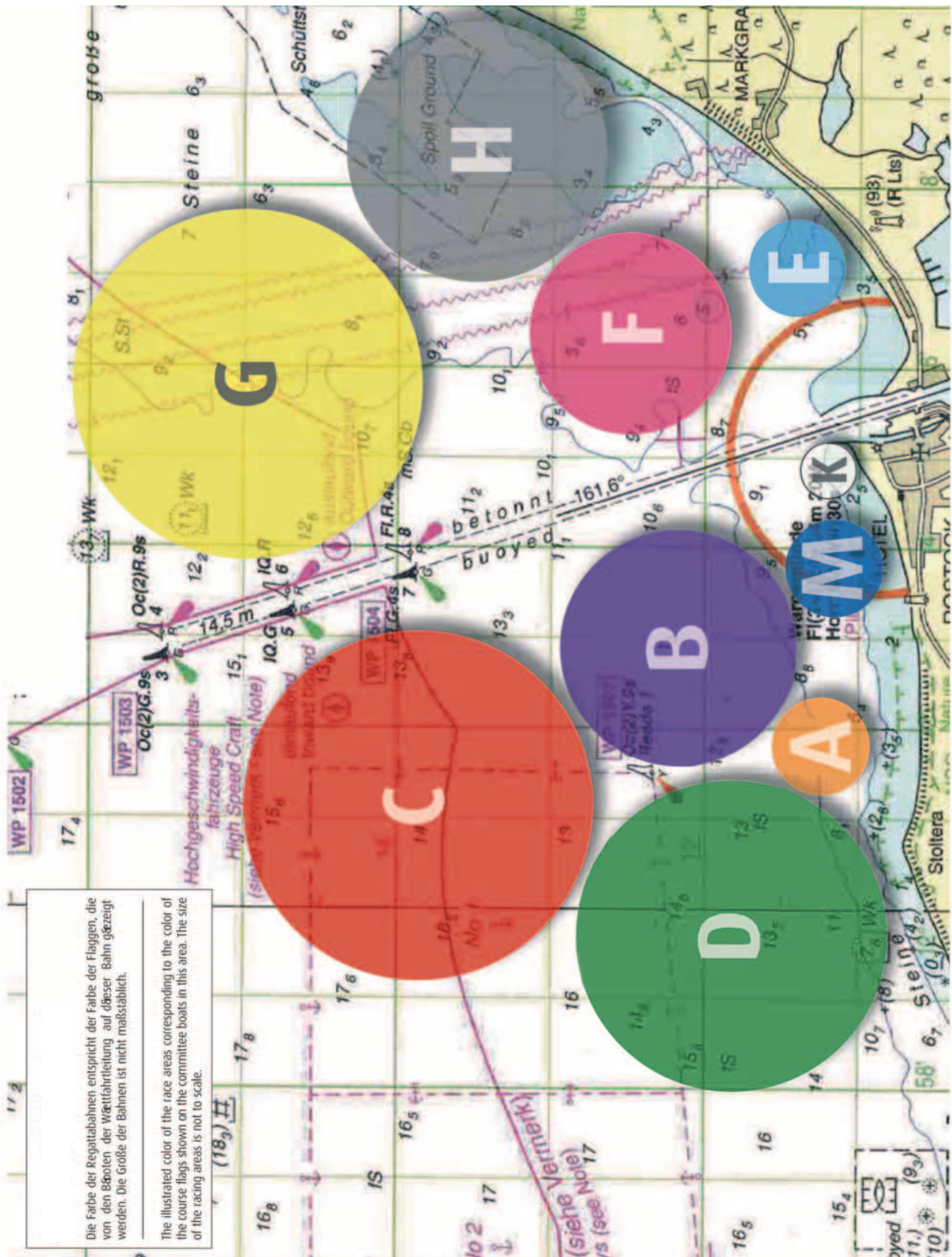
Weitere Informationen:



www.sika.de/marine

BUILDING TRUST





Frischer Wind für Rostock



HANDELSHOF ROSTOCK

Partner der Warnemünder Woche

Hier finden Sie
unsere Angebote



<https://grco.de/bc10pU>

Handelshof Rostock
Timmermannsstrat 12 | 18055 Rostock
www.handelshof.de





	Samstag Saturday 01.07.2022	Sonntag Sunday 02.07.2022	Montag Monday 03.07.2022	Dienstag Tuesday 04.07.2022	Mittwoch Wednesday 05.07.2022	Donnerstag Thursday 06.07.2022	Freitag Friday 07.07.2022	Samstag Saturday 08.07.2022	Sonntag Sunday 09.07.2022
Bahn Area M	Opti-Team-Cup	Opti-Team-Cup				29er 49FX	29er 49FX	29er 49FX	29er 49FX
Bahn Area A									
Bahn Area B	ILCA 4 ILCA 6 ILCA 7	ILCA 4 ILCA 6 ILCA 7	ILCA 4 ILCA 6 ILCA 7	ILCA 4 ILCA 6 ILCA 7		Star EHSC	Star EHSC	Star EHSC	Star EHSC
Bahn Area C	505 470	505 470	470	470					
Bahn Area D									
Bahn Area E									
Bahn Area F									
Bahn Area G					Soling European Championship	Soling European Championship	Soling European Championship H.Boot	Soling European Championship H.Boot	H-Boot
Bahn Area H								Offshore Up & Down	Offshore Up & Down
Bahn Area K									
Offshore	Mecklenburger Bäderregatta		Rund Bornholm Long Distance	Rund Bornholm Long Distance	Rund Bornholm Long Distance	Rund Bornholm Long Distance			

Assignments to areas subject to be changed in SI

Änderungen vorbehalten, Stand 26.06.2023

HIER WIRST DU EXPERTE UND FÜHRUNGSKRAFT.



Mach, was wirklich zählt:
ELEKTRONIKER/IN (M/W/D) BEI DER MARINE

► 1. Korvettengeschwader, Rostock



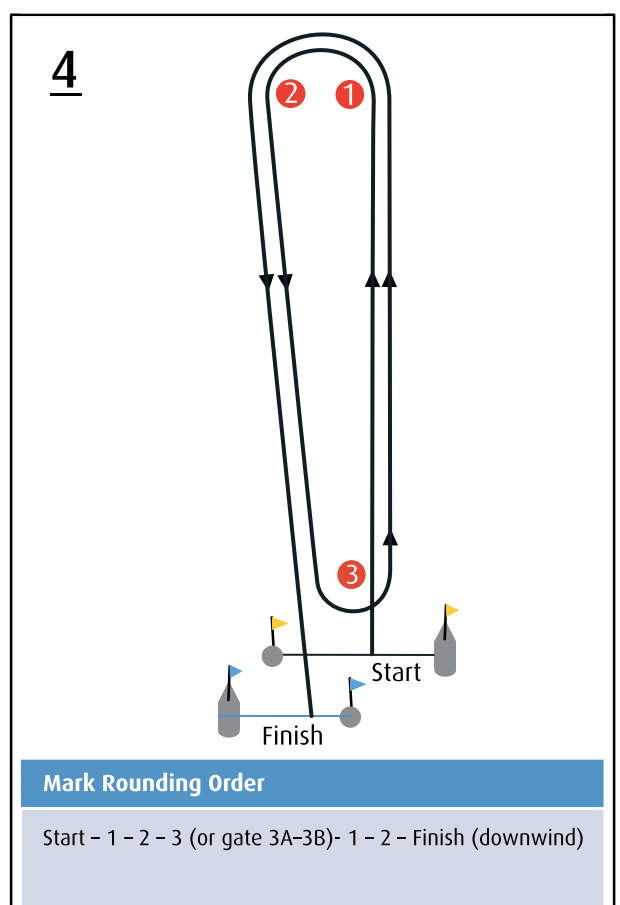
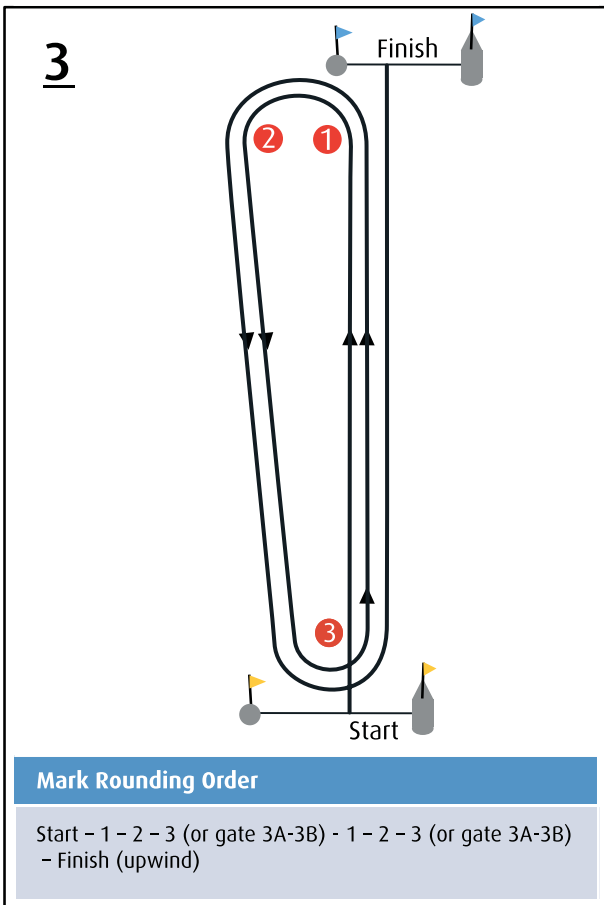
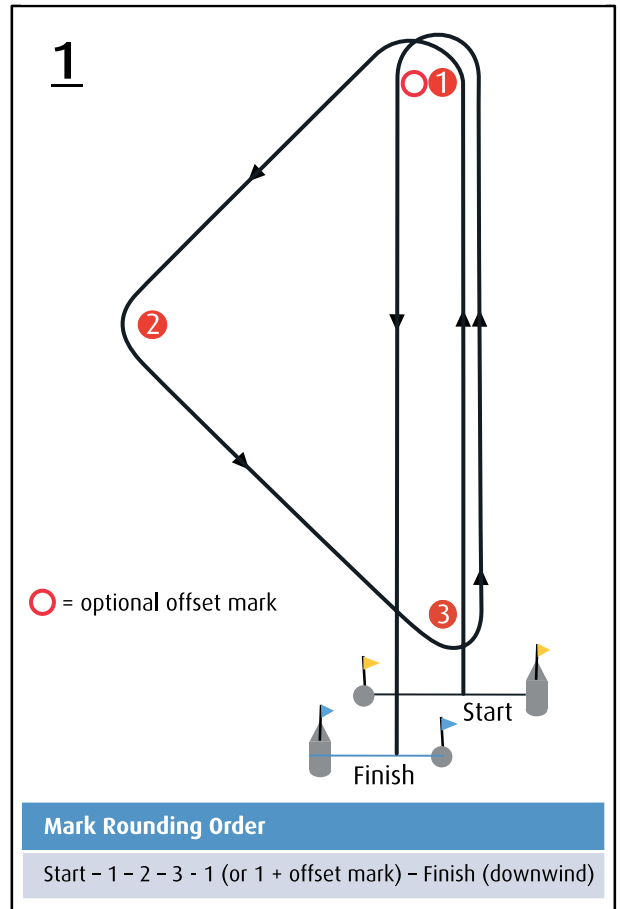
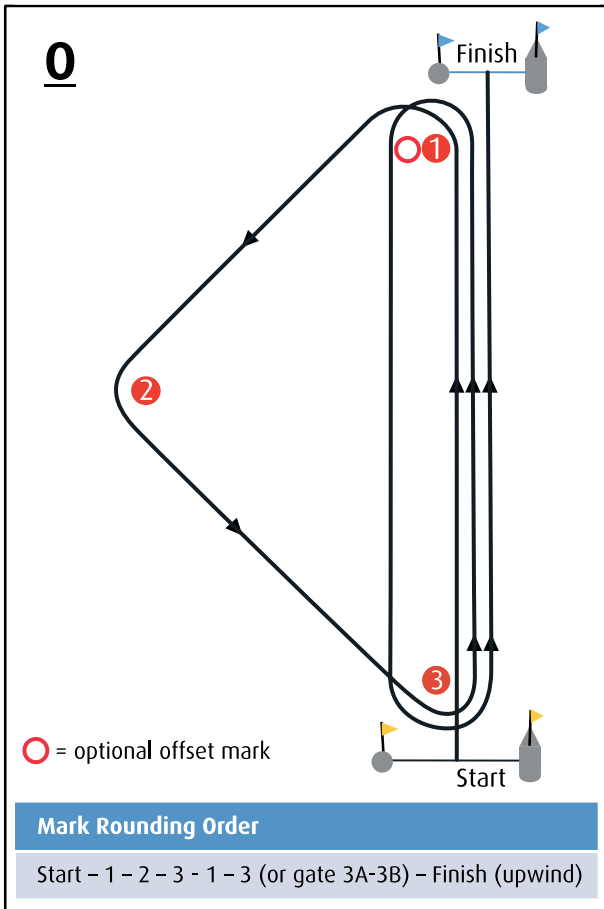
BUNDESWEHR

Gleich informieren
und beraten lassen:

0800 9800880
(bundesweit kostenfrei)

oder in einem Karriere-
beratungsbüro in Ihrer Nähe.

[bundeswehrkarriere.de](https://www.bundeswehrkarriere.de)



ROV BLUEEYE

ROV-basierte Inspektion von Schiffen

ROV Services

Unser Fokus ist die ROV-basierte Inspektion von Schiffen aus unterschiedlichen Ursachen, wie z.B. Kollision oder Grundberührung, Ruder- oder Propellerschäden.

- ✔ Eigner oder Versicherung können in Echtzeit die Video-Inspektion begleiten (via Microsoft Teams)
- ✔ 24/7 in Warnemünde oder auf See
- ✔ Umwelt- und Sicherheitsmanagement



Havarie Services



- ✔ Alle Taucherarbeiten
- ✔ Suche oder Bergung von Gegenständen, Ankern, etc.
- ✔ Abschleppung
- ✔ Yachtbergung
- ✔ Umweltschutz
- ✔ Ölbekämpfung
- ✔ Logistik Support





Ostseurlaub im Wellnesshafen

5-Sterne-Marina mit
920 Liegeplätzen

Faszinierende Wassersportwelt:
von Speedsailing bis Tauchen

Glück kann man chartern:
attraktive Segel- und Motoryachten
mit oder ohne Skipper

Wir freuen uns auf Sie!

Auf dem Weg zum Skipper:
vielfältiges Kursangebot

Einmal um die ganze Welt:
Wellness-Weltreise im
Hohe Düne SPA

Erfahren Sie mehr unter www.yachthafen-hohe-duene.de